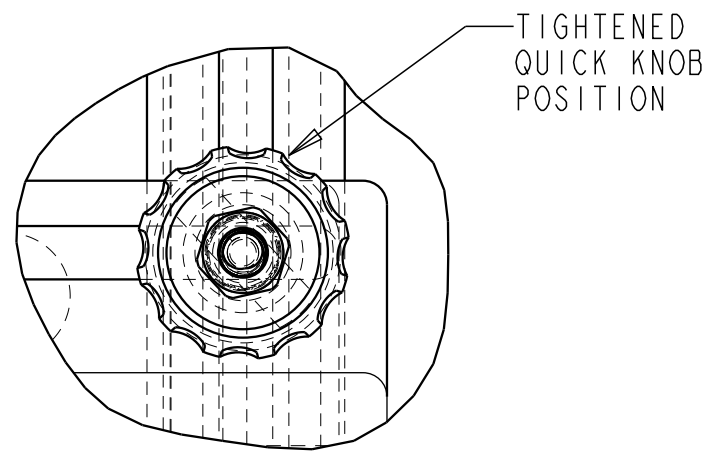
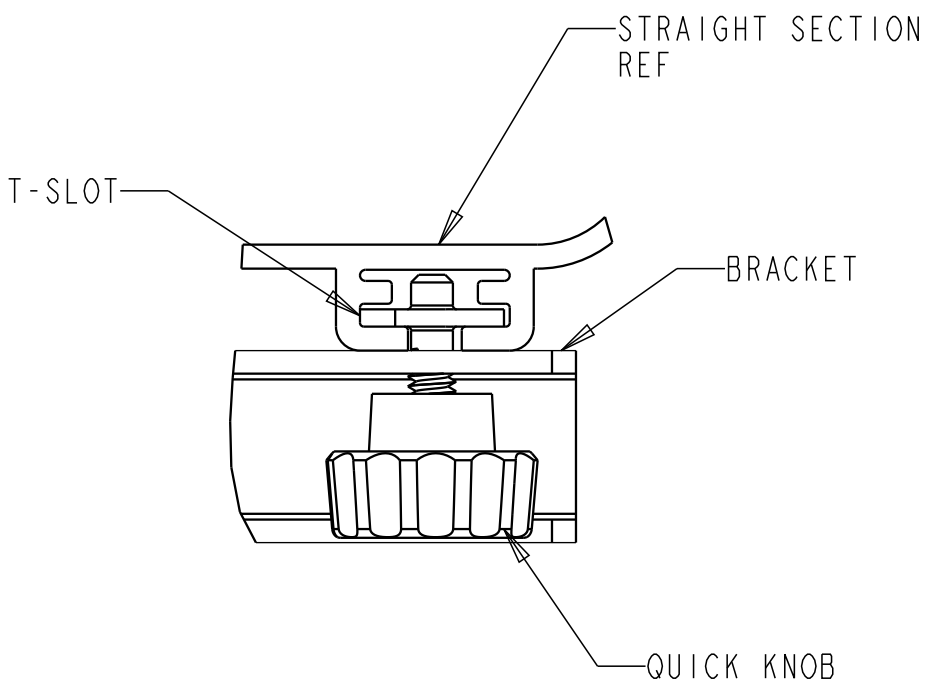
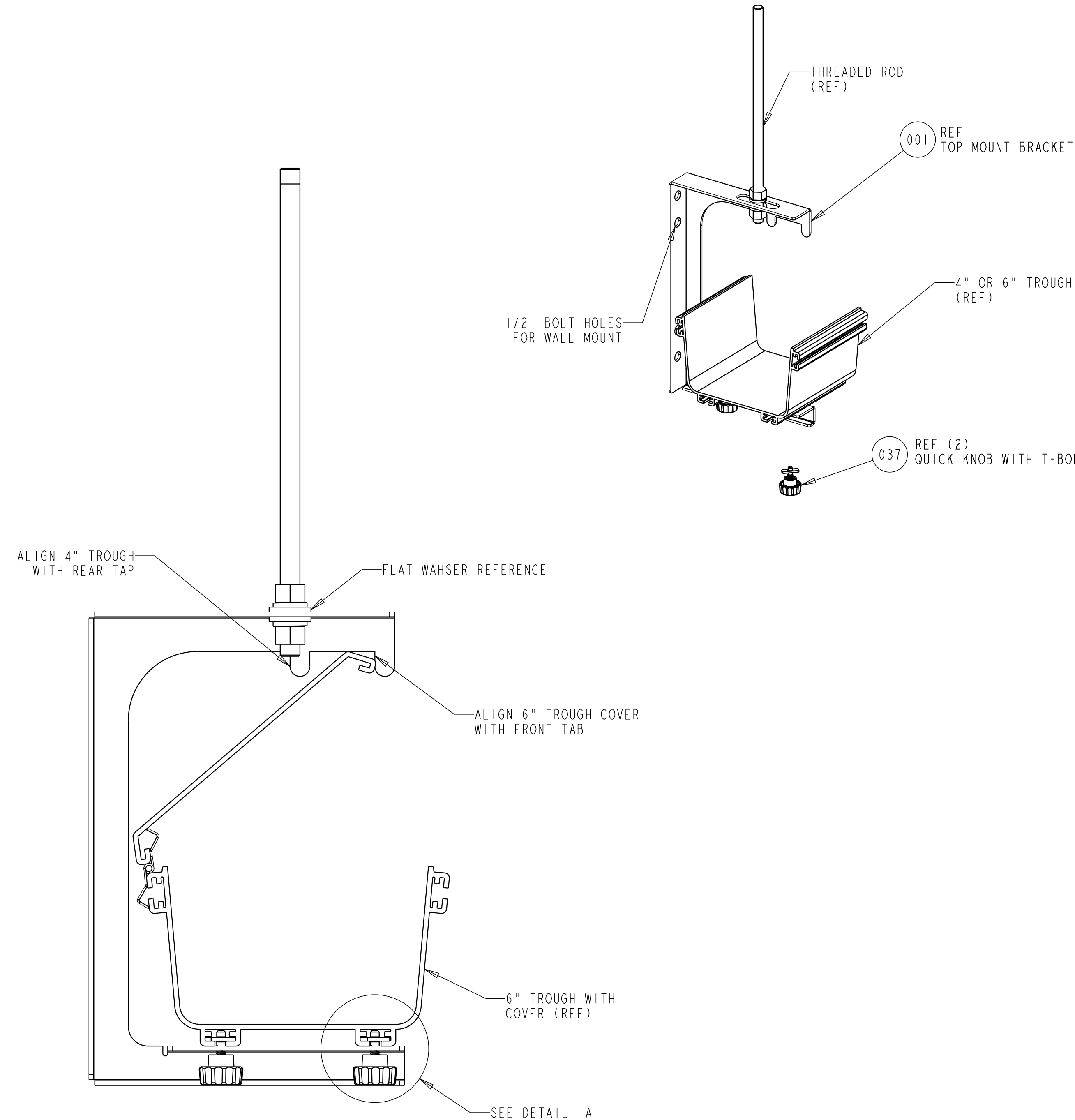


REV	MCO	DWN	DATE
B	20132598	JCS	28-MAR-03
C	40030119MCO	VFV	19-MAY-16



DETAIL A
QUICK KNOB ASSEMBLY
SCALE 1.000

NOTES:

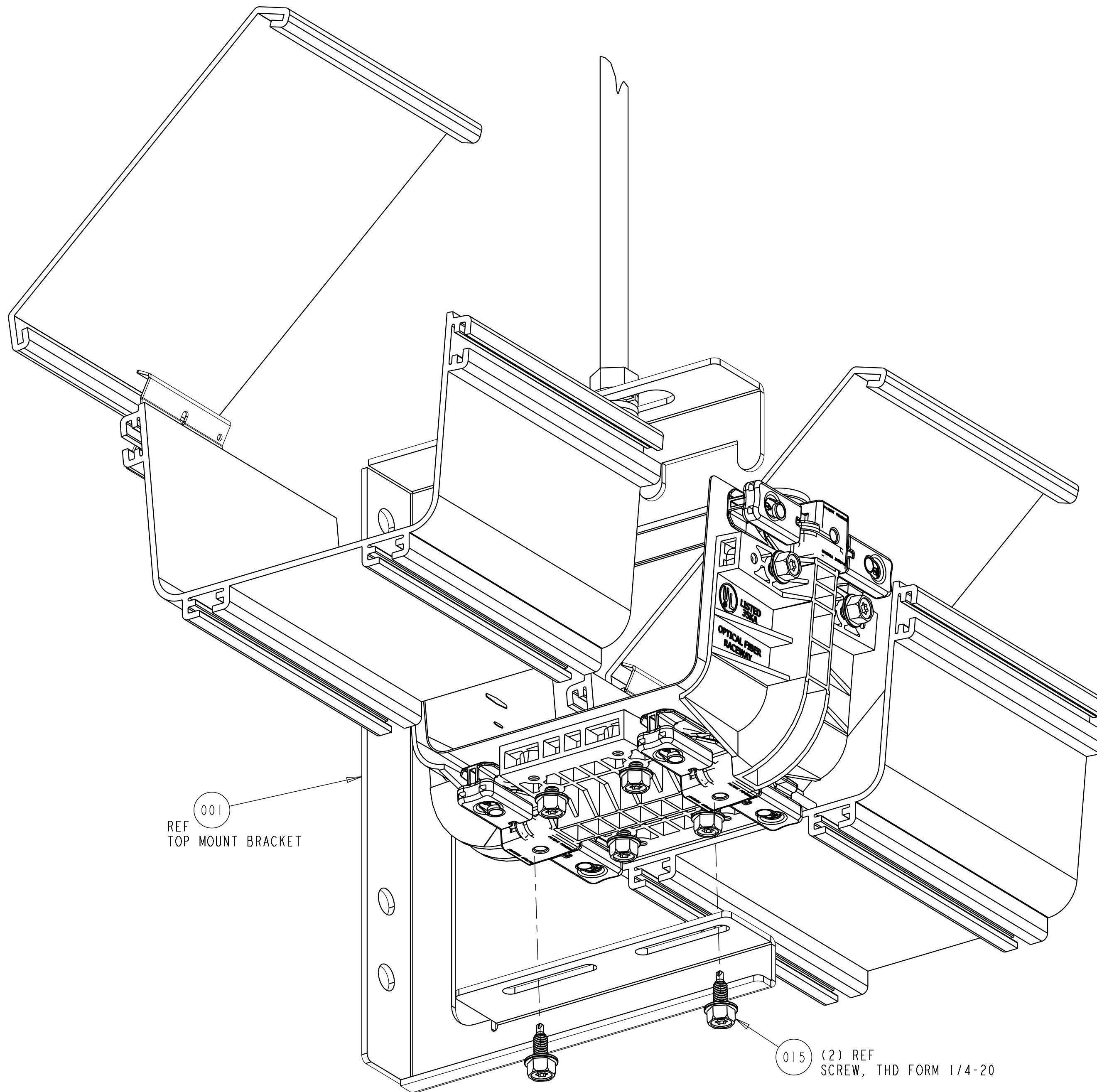
- QUICK KNOB INSTALLATION INSTRUCTIONS:
INSERT QUICK KNOB THROUGH BRACKET, ROTATE 90°, AND INTO T-SLOT IN FGS STRAIGHT SECTION. ROTATE CLOCKWISE SUCH THAT THE FLANGES EXTEND INTO T-SLOT. SEE DETAIL A.
- SEE DETAIL B FOR JUNCTION MOUNTING OPTION. USE 1/4 INCH SCREWS INCLUDED WITH KIT.
- INCLUDES TWO FLAT WASHER AS SHOWN

FGS-HNTS-5/8	TOP MOUNT FIBER GUIDE KIT 5/8" ROD
3 FGS-HNTS-1/2	TOP MOUNT FIBER GUIDE KIT 1/2" ROD
3 FGS-HNTS-12mm	TOP MOUNT FIBER GUIDE KIT 12mm ROD
FGS-HNTS-14mm	TOP MOUNT FIBER GUIDE KIT 14mm ROD
FGS-HNTS-16mm	TOP MOUNT FIBER GUIDE KIT 16mm ROD
CATALOG NUMBER	DESCRIPTION

COMMSCOPE, INC.

© 2016 COMMSCOPE, INC. CONFIDENTIAL NOTICE: THESE DRAWINGS AND SPECIFICATIONS ARE THE PROPRIETARY PROPERTY OF COMMSCOPE, INC. AND MAY BE USED ONLY FOR THE SPECIFIC PURPOSE AUTHORIZED IN WRITING BY COMMSCOPE, INC.		TITLE TOP MOUNT 4-6" FGS INSTALLATION DRAWING	
ALL DIMS AND TOLERANCES ARE INCHES UNLESS OTHERWISE SPECIFIED - ANGULAR: ±N/A	ENGR: CHARLES CAZETT DWN: CHRISTINE WIDNESS	DRAWING NUMBER 1174896_ADC	SHT. 1 OF 2

DO NOT SCALE DRAWING
DIMENSIONS IN INCHES
THIRD ANGLE PROJECTION



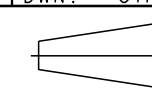
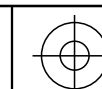
001
REF
TOP MOUNT BRACKET

015 (2) REF
SCREW, THD FORM 1/4-20

DETAIL B
JUNCTION MOUNT OPTION

COMMSCOPE, INC.

<small>© 2016 COMMSCOPE, INC. CONFIDENTIAL NOTICE: THESE DRAWINGS AND SPECIFICATIONS ARE THE PROPRIETARY PROPERTY OF COMMSCOPE, INC. AND MAY BE USED ONLY FOR THE SPECIFIC PURPOSE AUTHORIZED IN WRITING BY COMMSCOPE, INC.</small>		TITLE TOP MOUNT 4-6" FGS INSTALLATION DRAWING	
		C SIZE	DRAWING NUMBER 1174896_ADC C REV
ALL DIMS AND TOLERANCES .XX:±.02 ARE INCHES UNLESS .XXX:±.01 OTHERWISE SPECIFIED ANGULAR:±N/A		DO NOT SCALE DRAWING	
ENGR: CHARLES CAZETT DWN: CHRISTINE WIDNESS		SHT. 2 OF 2	



DIMENSIONS IN INCHES
THIRD ANGLE PROJECTION